

the product

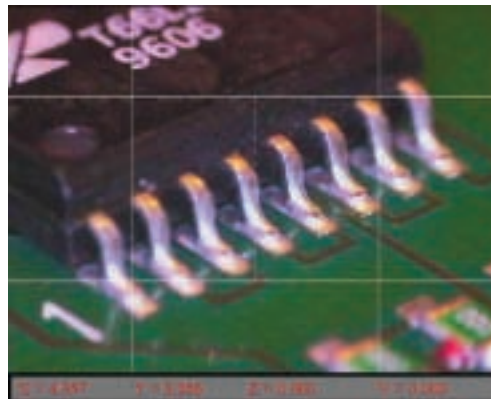
Develop a lead-free wave solder alloy that delivers high yield, fast throughput and economy.

ALPHA Vaculoy SACX0307 Lead-Free Solder Alloy

- High Yields
- Lowest Total Cost of Ownership
- Fast Wetting
- Low Dross Generation
- High Joint Mechanical Reliability
- Low Process Maintenance

ALPHA Vaculoy SACX0307 delivers high yields and excellent value.

- Fast wetting speed delivers improved solderability, outperforming all Sn/Cu based alloys.
- Excellent drainage, minimizes bridging.
- Strong, mechanically sound joints that deliver long in-service reliability.
- Low dross generation that enables low process maintenance and reduced solder usage.



alpha

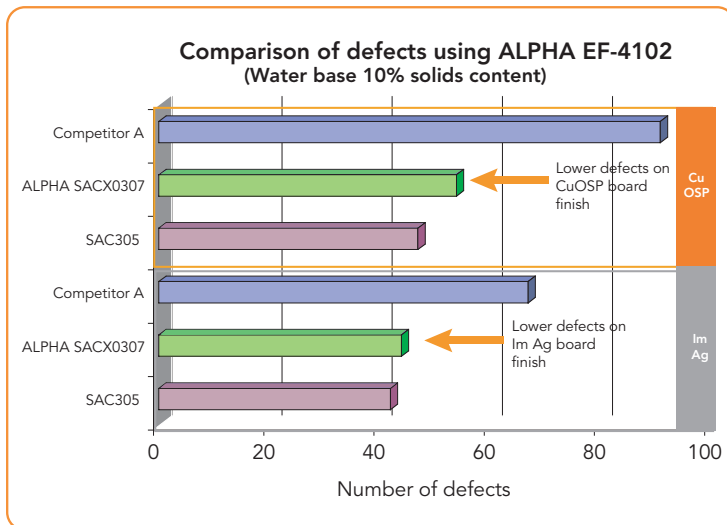
the product

ALPHA Vaculoy SACX0307 Lead-Free Solder Alloy

Better yield than all Tin Copper based alloys

- Superior drainage versus Tin Copper based alloys.
- Yield comparable to industry benchmark SAC305 alloy.
- Process window supports the use of a wide range of flux technologies.
- Copper dissolution rates lower than Competitor A.

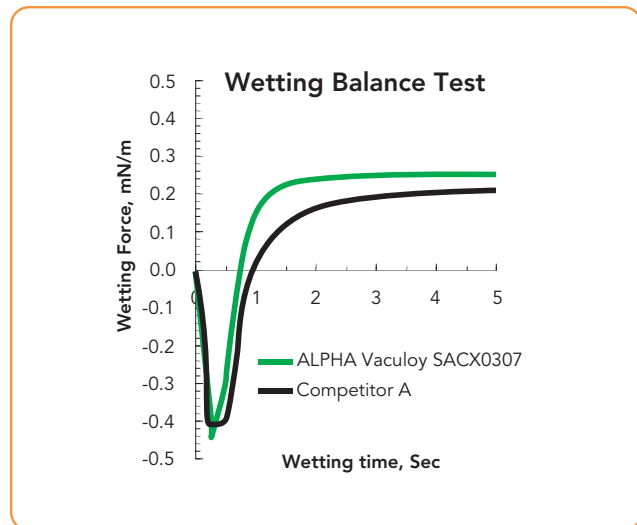
Competitor A: Leading competitor's Sn/Cu based alloy



Test conducted using Cookson test board designed to produce defects.

Faster wetting than all Tin Copper based alloys

- Faster wetting speed delivers better soldering yields.
- Reduced contact time.



Performance Summary

PROCESS BENEFIT	ALPHA VACULOY SACX0307	Performance Capability	Customer Benefit
Wave Solder Process	Yield	Comparable yield to Industry Standard Vaculoy SAC305 and much superior to leading competitor's Sn/Cu based alloy	Lower rework and warranty costs
	Wetting speed	Wetting speed of 0.75 sec compared to 0.65 sec for Industry Standard Vaculoy SAC305 and 1.00 sec for leading competitor's Sn/Cu based product	High yield and throughput rates achievable
	Contact time, pot temperature and conveyor speed	Contact time 2.3 - 3.5 sec, pot temperature 255° - 265° Celcius (491° - 509° F) Conveyor speeds 1.0 - 1.5 m/min (3.3 - 5 ft/min)	Wide wave solder process window
Process Maintenance	Dross generation	Low levels of dross generation	Lower solder consumption
	Copper dissolution rate	Equivalent to Industry Standard Vaculoy SAC305, process monitoring and equilibrium point for copper will be equivalent	Process monitoring costs are equivalent
Joint Reliability	Surface mount shear strength	Surface mount components shear strength comparable to higher cost, Industry Standard SAC 305	Equivalent reliability at lower cost
	Through hole pull strength	Equivalent to Industry Standard Vaculoy SAC305 for pull strength on through hole components	Equivalent reliability at lower cost
	Thermal cycling	Equivalent to Industry Standard Vaculoy SAC305 and 63/37 over 400 Cycles (-40° to +125°C) tests ongoing	Indication of acceptable product life

ALPHA

Worldwide Headquarters • 600 Route 440 • Jersey City, NJ 07304 • USA • 1-800-367-5460 • www.alphametals.com
 European Headquarters • Forsyth Road • Sheerwater • Woking GU215RZ • United Kingdom • 44-1483-758-400
 Asia-Pacific Headquarters • 1/F, Block A • 21 Tung Yuen Street • Yau Tong Bay • Kowloon, Hong Kong • 852-3190-3100

shared intelligence™



Cookson Electronics